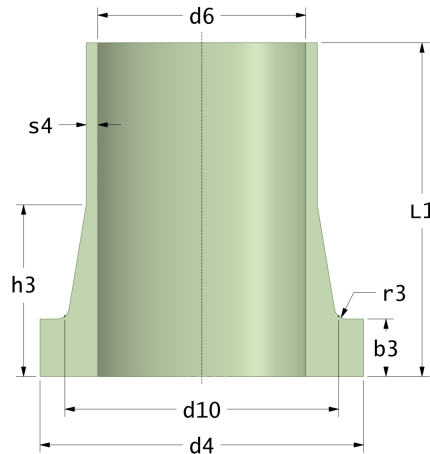


Brides tubulées

Bride à collerette tubulée

Drilling Standard: EN1092 PN16, Resin Type: Derakane 411



#	DN (mm)	Pmax (bar)	d4 (mm)	d6 (mm)	r3 (mm)	d10 (mm)	b3 (mm)	s4 (mm)	h3 (mm)	L1 (mm)	Article Number
1	25	16	68	25	2	50	12	5	25	250	TSS-25-250/EN
2	32	16	78	32	3	58	14	5	27	250	TSS-32-250/EN
3	40	16	88	40	3	68	14	5	30	300	TSS-40-300/EN
4	50	16	102	50	3	82	14	5	35	300	TSS-50-300/EN
5	50	16	102	50	3	82	14	5	35	600	TSS-50-600/EN
6	65	16	122	65	3	95	18	5	45	300	TSS-65-300/EN
7	65	16	122	65	3	95	18	5	45	600	TSS-65-600/EN
8	80	16	138	80	3	111	23	5	50	300	TSS-80-300/EN
9	80	16	138	80	3	111	23	5	50	600	TSS-80-600/EN
10	100	16	158	100	4	133	25	5	57	300	TSS-100-300
11	100	16	158	100	4	133	25	5	57	600	TSS-100-600
12	125	16	188	125	4	160	28	5	67	300	TSS-125-300
13	125	16	188	125	4	160	28	5	67	600	TSS-125-600
14	150	16	212	150	4	188	32	5.5	76	300	TSS-150-300
15	150	16	212	150	4	188	32	5.5	76	600	TSS-150-600
16	200	10	268	200	5	237	29	5	84	360	TSS-200-360

Disclaimer

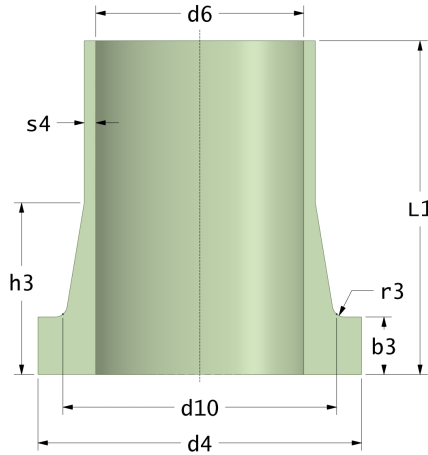
Whilst every care is taken to ensure that the information on this website is complete and accurate, the Rotec Composite Group BV cannot accept responsibility for any omissions or inaccuracies or for any consequences arising therefrom. By using this website, the user accepts the terms of this disclaimer.

21-08-2024

Brides tubulées

Bride à collerette tubulée

Drilling Standard: EN1092 PN16, Resin Type: Derakane 411



#	DN (mm)	Pmax (bar)	d4 (mm)	d6 (mm)	r3 (mm)	d10 (mm)	b3 (mm)	s4 (mm)	h3 (mm)	L1 (mm)	Article Number
17	200	10	268	200	5	237	29	5	84	600	TSS-200-600
18	200	16	268	200	5	237	35	6	90	360	TSS-216-360
19	200	16	268	200	5	237	35	6	90	600	TSS-216-600
20	250	10	320	250	5	293	38	5.5	106	360	TSS-250-360
21	250	10	320	250	5	293	38	5.5	106	600	TSS-250-600
22	300	10	376	300	5	343	40	6	121	360	TSS-300-360
23	300	10	376	300	5	343	40	6	121	600	TSS-300-600
24	350	10	436	350	7	398	38	8	135	360	TSS-350-360
25	400	10	487	400	8	451	42	8	150	360	TSS-400-360
26	400	10	487	400	8	451	42	8	150	600	TSS-400-600
27	500	10	592	500	8	556	48	9	180	360	TSS-500-360
28	500	10	592	500	8	556	48	9	180	600	TSS-500-600
29	600	10	693	600	8	647	54	9	210	360	TSS-600-360
30	600	10	693	600	8	647	54	9	210	600	TSS-600-600

Disclaimer

Whilst every care is taken to ensure that the information on this website is complete and accurate, the Rotec Composite Group BV cannot accept responsibility for any omissions or inaccuracies or for any consequences arising therefrom. By using this website, the user accepts the terms of this disclaimer.

21-08-2024